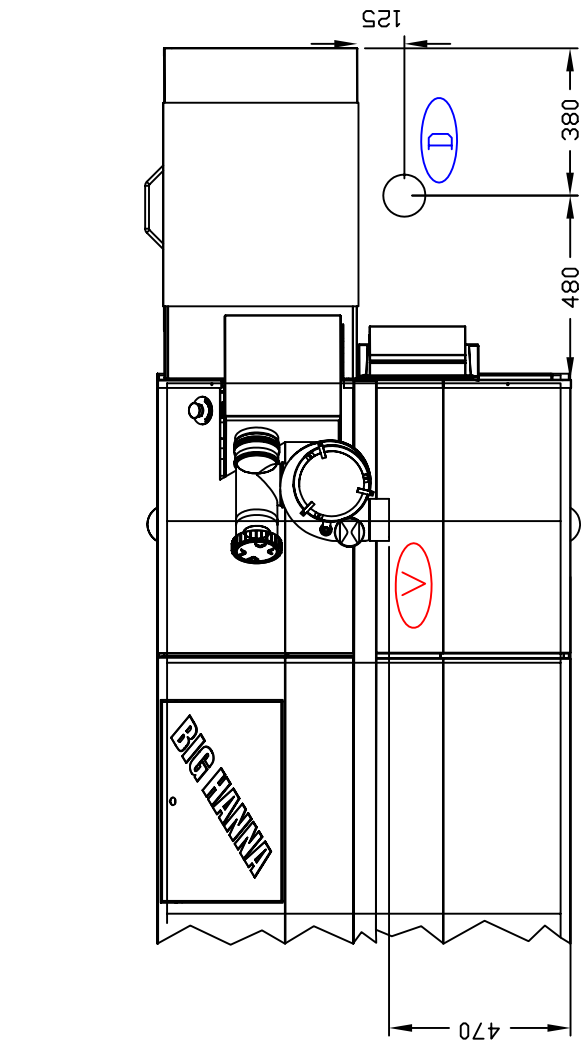
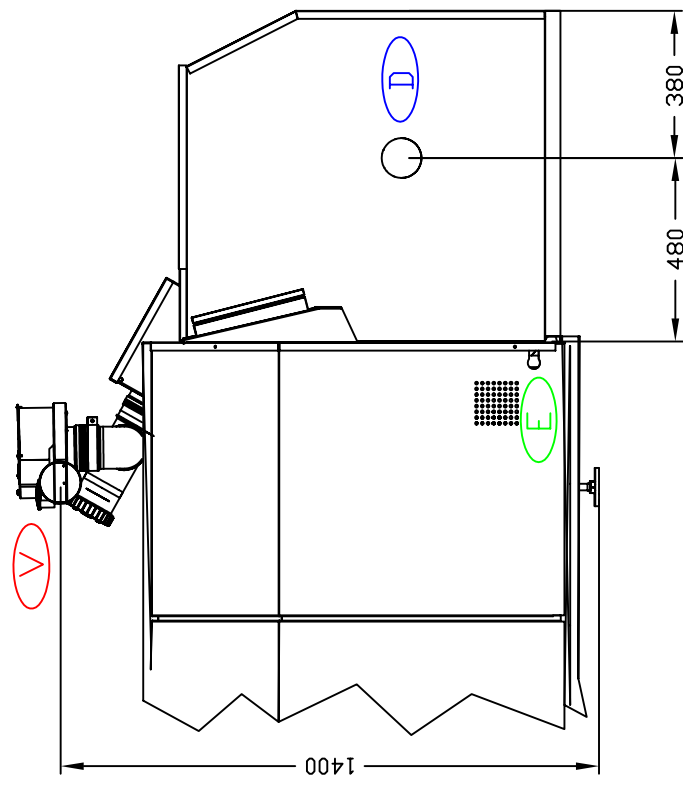


A B C



**E**

**ELECTRICAL SUPPLY**

Model T60\_40L, T75\_40L and T120\_40L  
(incl 40L hopper fed inlet without a Shredder):  
3-phase, 5-wire, 50Hz, 400V, 10A

Model T60\_40LS, T75\_40LS, T120\_40LS  
(incl 40L hopper fed inlet with a Shredder):  
3-phase, 5-wire, 50 Hz, 400V, 16A

All machines are delivered with a 5m cable incl CEE pin. Exit point for cable from machine is marked on drawing.

**D**

**DRAINAGE**

Suggested location of Ø75 or Ø110 mm connection point for drainage water from hopper fed inlet. Connection is Ø75 mm on the machine but all machines are supplied with a Ø75 to Ø110 mm extension so that either Ø75mm or Ø110 standard sewage pipes can be used.

**V**

**VENTILATION**

Ventilation is connected from the fan to sewage, a biofilter or into open air. Point for connection on the fan for Ø110 mm standard sewage pipes.

DO NOT SCALE DRAWING	DATE: 2008-11-21
<b>Susteco AB</b>	
TITLE: Big Hanna / ALExtruman services requirements for models T60_40L, T60_40LS, T75_40L, T75_40LS, T120_40L, T120_40LS (Incl 40L hopper with or without a Shredder)	
DWG NO.	A4
SCALE: 1:20	SHEET 1 OF 1