



LOGGING

For Big Hanna model T60-240 software is available for logging of settings and temperatures on your computer. By using a cable connection to a computer the temperatures are logged every 10, 30 or 60 seconds or minutes.

CABLE CONNECTION TO THE MACHINE

The Big Hanna can be ordered with 40 m cable connected to the PC_Board on the machine. This option can be retrofitted provided the PC-Board has a COM port. If this is not the case the PC-Board has to be upgraded to a small cost. The cable from the machine is connected to a com-port on a computer. If the computer does not have a com-port there are adapters COM to USB available, see picture below. The necessary software is delivered on a CD. The computer can not be more than 40 cable metres from the electrical cabinet of the machine.

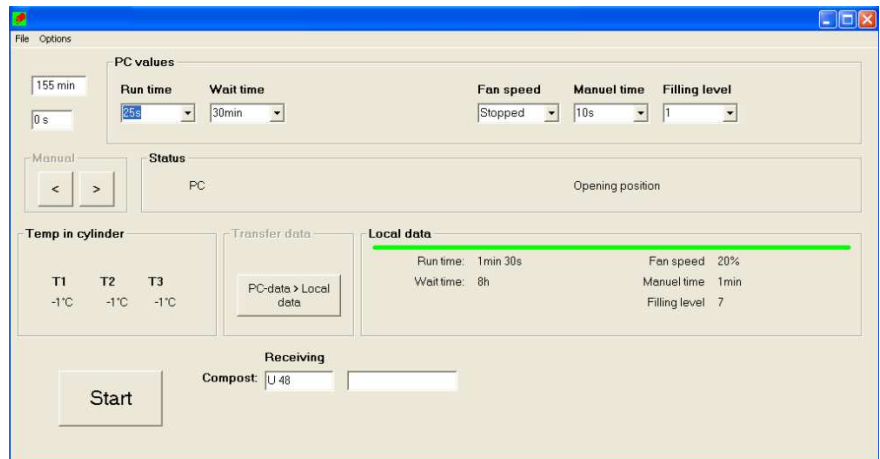


CHANGING SETTINGS

The settings of the machine are shown on the computer once the machine is connected. The machine can be operated either from the computer or from the machine's display. The machine's display indicates if the machine is set to run on 'PC Control' or from the machine: 'Local Control'.

TEMPERATURES IN CYLINDER

When the machine is connected the temperatures in the cylinder is also shown in the program. The temperatures can be logged every 10, 30 or 60 seconds/minutes.



SAVE THE LOG FILE

To log the parameters press the "Start" – button in the program. The computer has to be on and connected in order to log the settings and temperatures. By pressing "Stop" the log file is saved in a *.KOM format. The data can be read from this file or opened in other programs like Microsoft Excel.

OPENING FILES IN EXCEL

The *.KOM files can be opened by EXCEL which can then be used to produce data and diagrams such as graphs of temperatures. This facilitates keeping a track record and is also a very useful tool in keeping the biological process running.

